

White's Tree Frog

Don't be frog-etful!
Hop into action with
our frog activity pack.

The White's tree frog is a green or blue-green frog native to Australia, Indonesia, and New Guinea. They are described as quiet, very gentle, laid back animals that, unlike most of their relatives, are not into jumping. White's tree frogs are nocturnal, which means they are more active at night.

What did the frog order at McDonald's?

French fries and a diet croak.

Meet Bunji!

Scientific Name:

Litoria caerulea

Class: Amphibian

Lifespan: 16 years

Threats: Habitat destruction and accidental killing.

Distribution: Australia and New Guinea

Habitat: Moist and forested environment.

Length: 3 to 4.5 inches

Diet: Small insects

Housing: Tall glass terrarium

Social Behaviour:

They are docile and mainly nocturnal creatures that are not very active. They are remarkably people-friendly.

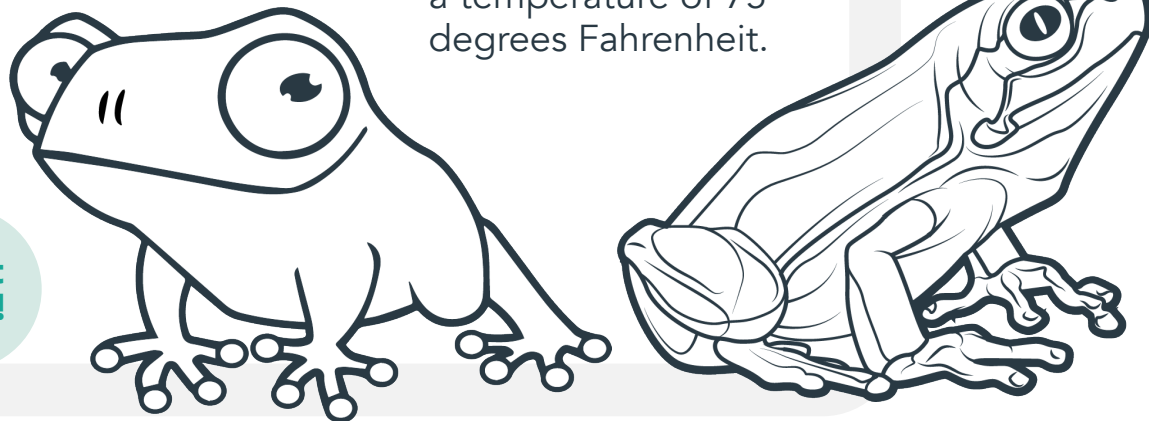
Things To Know:

White's tree frogs need a tall tank and branches as they are tree frogs and climb trees.

They require soil in the tank and a large dish of water. The tank should be warm and a temperature of 75 degrees Fahrenheit.

FACT FILE:

Some frogs have a special chemical in their skin which helps to stop a virus called HIV which causes a condition in humans called AIDS.



Colour us in!

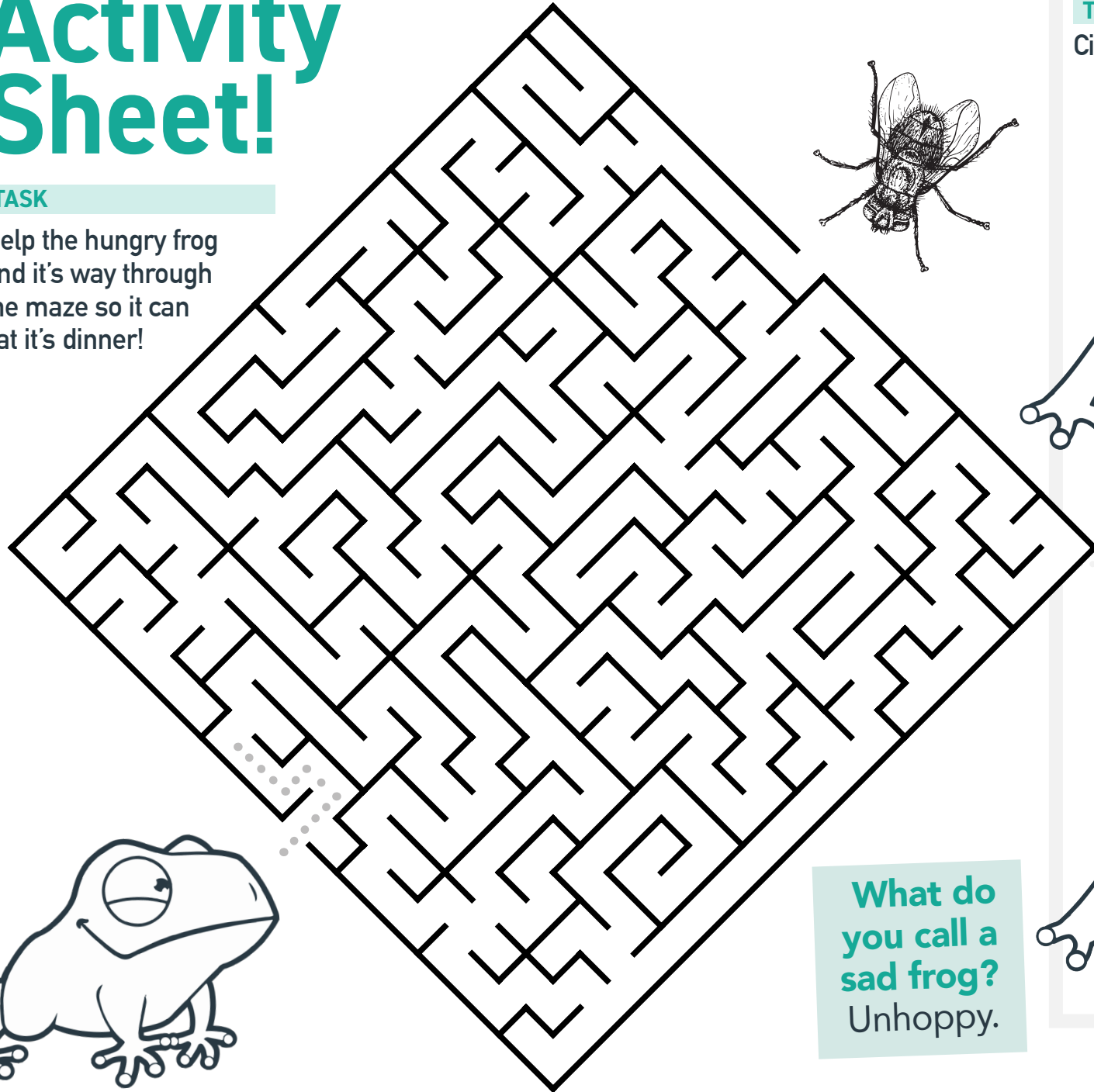


ZOOLAB

Activity Sheet!

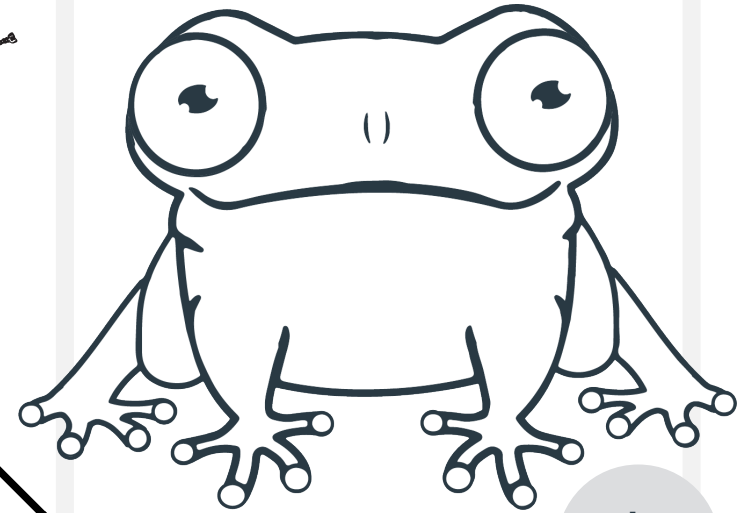
TASK

Help the hungry frog find its way through the maze so it can eat its dinner!

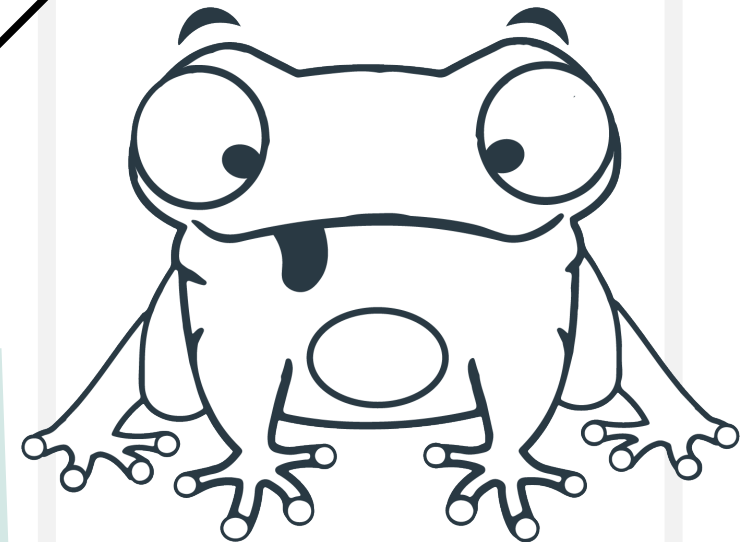


TASK

Circle five differences between the frogs



Colour me in!



What do you call a sad frog?
Unhappy.





Wordsearch

How many of these frog-themed words can you find?

~~FROG~~
AMPHIBIAN
POND
HOP
RIBBIT

SLIMY
CROAK
TADPOLE
NOCTURNAL
TREE CLIMB

