

Giant African land snail

These guys are lot larger than your everyday garden snail. Get the BIG facts here.

The first thing you'll notice about a Giant African Land Snail is its size. It's 8cm high, can grow to nearly 20cm long - that's bigger than your hand!

When a snail grows, it gets a new spiral on it's shell every year. This is called a Whorl.

Giant African land snails are nocturnal, moving around at night to feed on a wide range of plants.

What was the snail doing on the motorway?
About a mile a day!

Scientific Name:
Achatina fulica

Classification:
Gastropod

Lifespan: 6-10 years

Threats: Hermit crab, coconut crab and some bird species

Distribution:
East Africa

Habitat: Forest floor

Appearance:
Giant African land snails can grow up to 12 cm in length and weight up to 600g. They can be identified by their mottled brown, conical-shaped shells

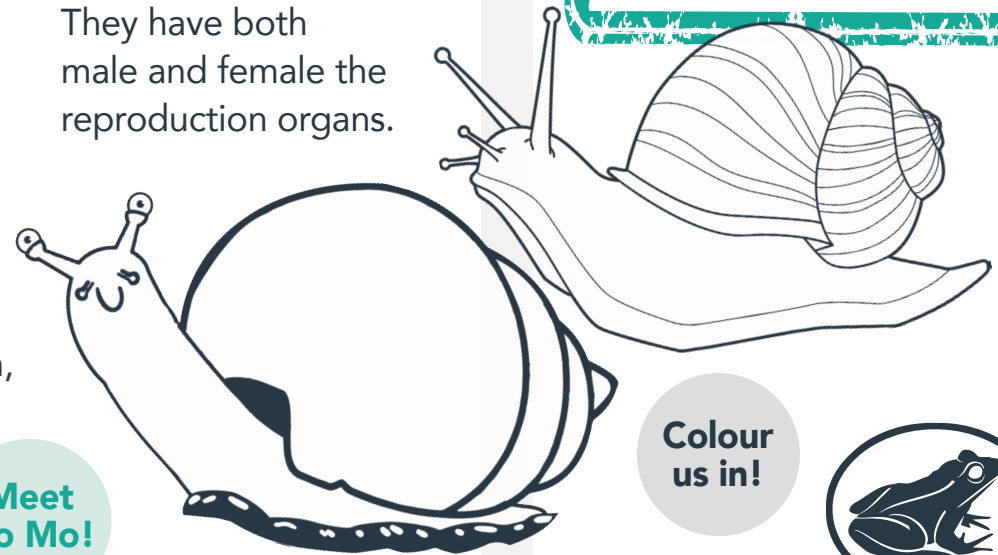
which have vertical stripes and a yellow foot

Diet & Feeding:
Leaf litter

Social Behaviour:
Giant African land snails are nocturnal, moving around at night to feed. Snails spend much of their time alone.

Males and females:
They have both male and female the reproduction organs.

FACT FILE:
Giant African land snails can drastically reduce its metabolism and survive for a few months or even a few years without any food.



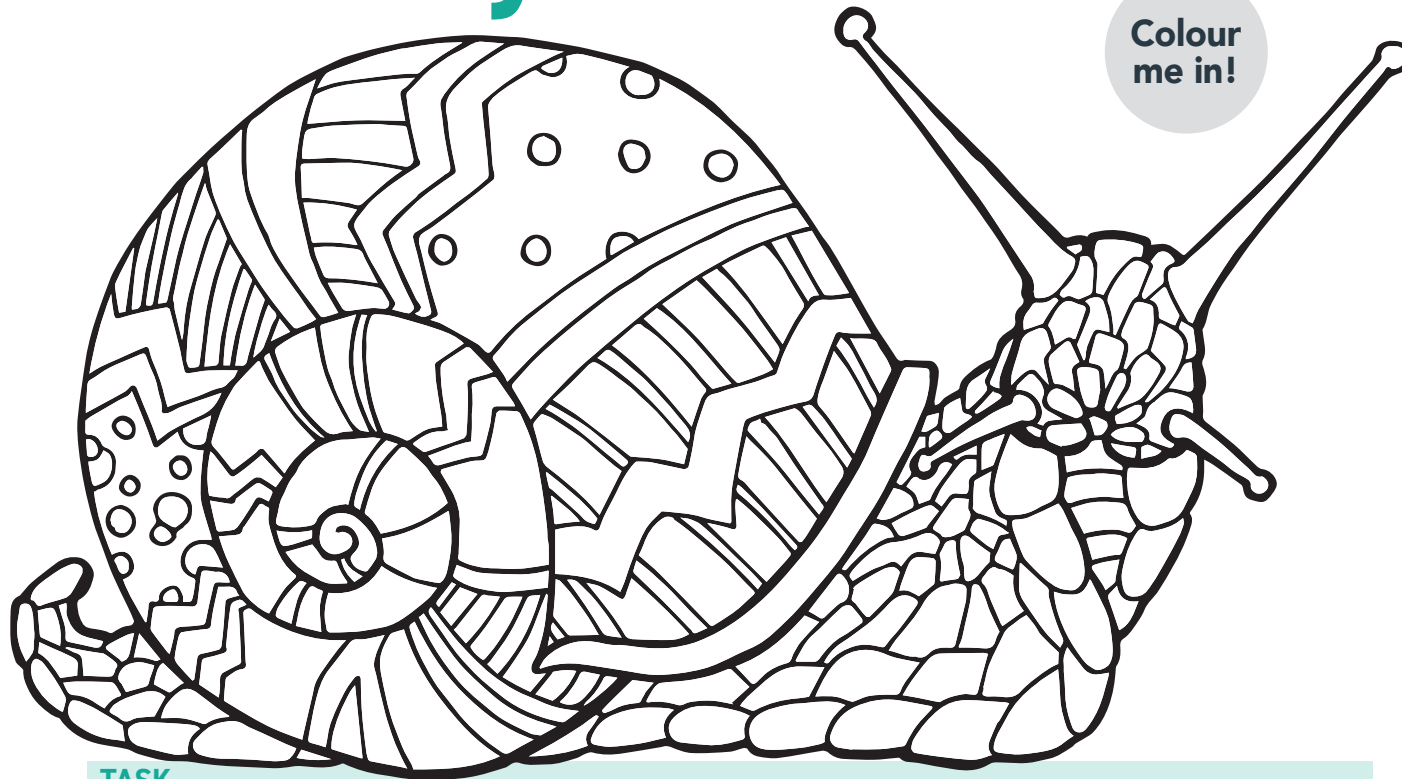
Meet Slo Mo!

Colour us in!



ZOOLAB

Activity Sheet!



Colour me in!

TASK

Un-jumble the letters below to spell a word.

CLUE: The snail produces this on it's foot

I E M S L

CLUE: Carried on the snail's back

H L E S L

CLUE: Where the snail is originally from?

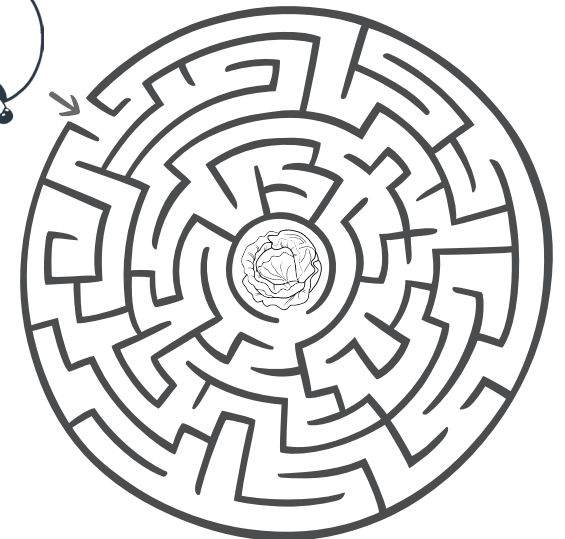
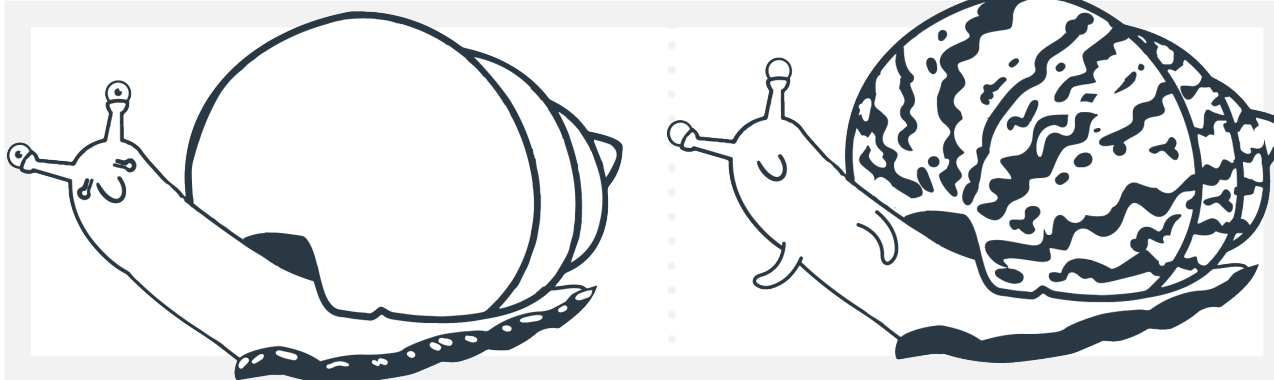
R A I C F A

CLUE: It gets a new one of these every year

H W R L O

TASK

Circle five differences between the two pictures



TASK

The snail is hungry. Help him get his dinner!

Wordsearch

How many of these snail-themed words can you find?

~~SLIME~~

SHELL

FOOT

TEETH

SLOWLY

RADULA

INVASIVE

NOCTURNAL

LEAF LITTER

TENTACLES

